



**HAWAII
STATE**

FEDERAL CREDIT UNION

always right by you

credit LINES

September 2021 • Volume 43 • Number 9



**Find your
happy place** 
at Hawaii State FCU

Join The Hawaii State FCU Family

Our credit union is growing – and we’re looking for a number of talented, hard-working individuals to become a part of our Hawaii State FCU family. If you or anyone you know is looking for a rewarding career, we may be the right place for you! In addition to great benefits, growth opportunities and an engaging corporate culture, we have been named a Hawaii Business Magazine Best Places to Work for 10 years.

Over the next year, we will be opening several new branches in Safeway locations across Oahu and Maui, as well as completing our new Hawaii State FCU Headquarters in downtown Honolulu. We are currently hiring to staff these new locations as well as fill positions in a number of back office areas.

To learn more about what it’s like to work at Hawaii State FCU, view a list of available positions and apply online, visit www.HawaiiStateFCU.com/careers.

Your Opinion Counts

We value your opinion. In order to improve the service we provide to members, Market Trends Pacific, Inc. may call you within 48 hours after you receive a service. Your participation is voluntary and no personal information will be asked of you.

Events & Branch Holiday Schedule

For more information, visit www.HawaiiStateFCU.com/events

September 6 Holiday Closure: Labor Day

September 15 Webinar: The Basics of Homebuying
at 10:00 a.m.

September 22 Webinar: Medicare Made Easy
at 12:00 p.m.



Thank You For Supporting Our Food Drive!

Hawaii State FCU would like to express our appreciation to all of the members, employees, neighbors and family members who supported our 2021 Food Drive. Thanks to your generosity, we were able to raise a total of \$24,500 and nearly 5,000 pounds of canned and nonperishable food to benefit the Hawaii Foodbank and Maui Food Bank. The monetary donations include a matching donation of \$10,000 made by Hawaii State FCU, as a result of the credit union reaching its fundraising goals.

We are so grateful to everyone who contributed to the success of this year’s Food Drive. Thank you for joining us in the fight against hunger in Hawaii!

Congratulations to our 2021 Scholarship Winners

Since 1996, Hawaii State FCU's Lowell Kalapa Scholarship program has awarded nearly \$900,000 to deserving students pursuing a higher education. This year, the Hawaii Community Foundation once again administered our program, assisting us with awarding 20 scholarships totaling \$100,000.

Hawaii State FCU would like to congratulate this year's scholarship recipients. They represent a wide range of talented individuals, attending schools both here and across the Mainland, working towards undergraduate and graduate degrees. We're proud of their accomplishments and encourage them to continue to dream big!



Kobey Arai
UNIVERSITY OF HAWAII - MANOA



Seth Arakawa
OREGON STATE UNIVERSITY



Logan Brown
UNIVERSITY OF SAN FRANCISCO



Cierralyn Cabral
UNIVERSITY OF HAWAII - HILO



Irelyn Carba
UNIVERSITY OF NEVADA - LAS VEGAS



Nalehua O Puna Donlin
UNIVERSITY OF HAWAII - MANOA



Jailynn Hale
CHAMINADE UNIVERSITY OF HONOLULU



Gabriella Johnson
UNIVERSITY OF HAWAII - WEST OAHU



Keahi Kahui
UNIVERSITY OF HAWAII - MANOA



Sheri Komori
PACIFIC UNIVERSITY



Deonna Lee Loy
CHAMINADE UNIVERSITY OF HONOLULU



Skylar Lee-Stefanov
UNIVERSITY OF CALIFORNIA - IRVINE



Charlise Limjoco-Ragasa
UNIVERSITY OF WASHINGTON



Kamehalani Ortiz
UNIVERSITY OF HAWAII - WEST OAHU



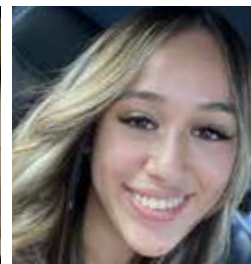
Malulani Paiste
UNIVERSITY OF HAWAII - MANOA



Kristin Paleka
GRAND CANYON UNIVERSITY



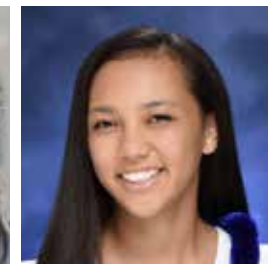
Alexis Pasion
HAWAII PACIFIC UNIVERSITY



Madisyn Polendey
CHAMINADE UNIVERSITY OF HONOLULU



Trixie Rosal
OHLONE COMMUNITY COLLEGE



Tatiana Soon
COLORADO STATE UNIVERSITY - FORT COLLINS

Board of Directors

Chairman	Terrence Aratani
Vice Chairman	Grant Tanimoto
Treasurer	Ryan Morita
Secretary	Mark Yamakawa
Director	Marion Higa
Director	Kaulana Park
Director	Monica Toguchi Ryan

Supervisory Committee

Chairman	Susan Ee
Secretary	Judy Dang
Member	Gordon Fukumoto
Member	Stanley Sawai
CEO & President	Andrew Rosen

Member Service Call Center

Oahu:	(808) 587-2700
US Toll-Free:	(888) 586-1056
Monday to Friday:	7:30 am - 6:00 pm
Saturday:	9:00 am - 5:00 pm

For a full list of branches and hours please visit www.HawaiiStateFCU.com

/HawaiiStateFCU



Federally insured by NCUA